

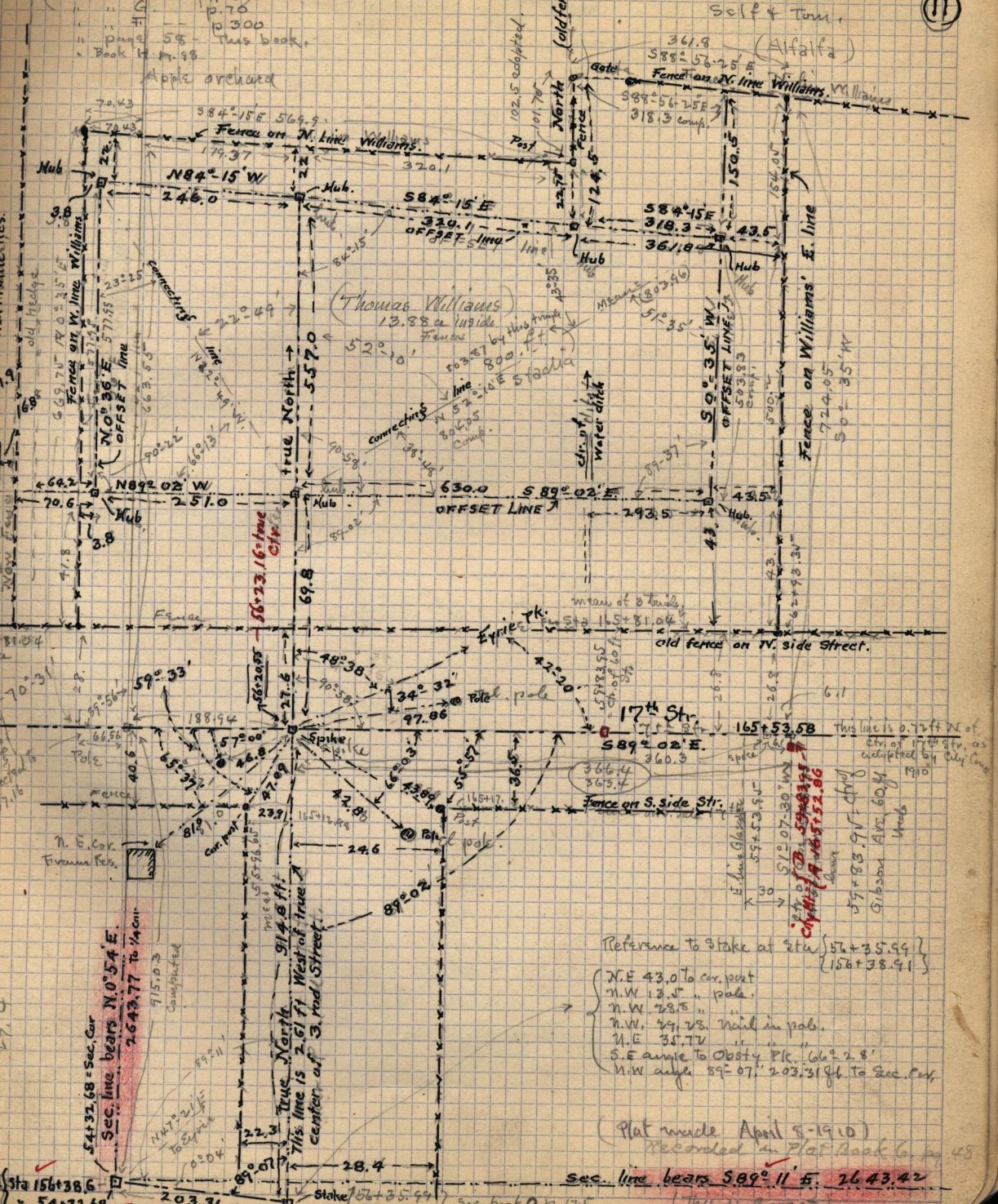
April 4-1910 Survey for Thomas Williams in S.W. 1/4 Sec. 20 and S.E. 1/4 Sec. 19 Twp. 6-N-R.1.W.

(11)

See Plat Book p. 87

Book p. 125
p. 70
p. 300
page 55 - This book.
Book p. 98

Apple orchard



Reference to stake at Sta. { 156+35.99 }
{ 156+38.91 }

N.E. 43.0 to cor. post
N.W. 12.5 " pole.
N.W. 28.5 "
N.W. 39.23. Nail in pole.
N.E. 35.74
S.E. angle to Obstaty Pk. Gl. 2.8'
N.W. angle 89° 07' 203.31 ft to Sec. Cor.

Plat made April 8-1910
Recorded in Plat Book p. 48

sec. line bears S89° 11' E. 2643.42

(this is correct)

See book p. 178

Sta 156+38.6
54+32.68
Sec. line bears N0°54'E
2643.77 to 1/4 cor.
915.03
Compensated

True North
914.8 ft
This line is 2.61 ft West of true center of S. road Street

Station 156+38.91
Station 156+52.86

Glen Glassboro
59+83.91 ft
Glasbor Ave. 60 ft
Hub

This line is 0.72 ft W of cor. of 17th Str. as adopted by City Council 1910